



Porta Potty / Porta Pottie / Portalets – Placements and Basic Guidance

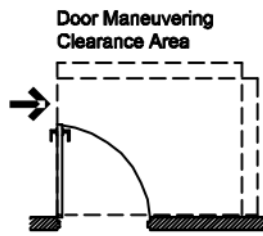
The Rule: Persons with disabilities must be provided the same opportunities to use a restroom facility as anyone else. To comply with the ADA, ([Section 213.2.3](#), 2010 ADAS) at least 1 or 5% of porta potty placements in each cluster must be accessible in terms of placement and unit size. More in depth instruction on porta potty placements and restroom provisions can be found in our full-length *Porta Potty Placements and General Guidance* and our *ADA Restroom Requirements and Considerations* guide.

- 1) One or more per cluster:** What is a cluster? A cluster is a grouping. If another grouping is not readily visible (close by), or if in a distinctly different accessible area – we will likely need another accessible porta potty with the other grouping as it would be a separate cluster.
- 2) Accessible Route:** Porta potty must be on a stable, firm, and slip resistant surface that is free of surface discontinuity ($\frac{1}{4}$ " maximum vertical lift or $\frac{1}{2}$ " beveled), and any openings greater than $\frac{1}{2}$ " wide, that is also level (2% or less grade). No GRAVEL, GRASS, DIRT route placements are allowed. **Note** – the porta potty itself may be in gravel, grass, or dirt. The route, approach and door entry area must be on a level hard surface.
- 3) Accessible Approach/Orientation:** We must have clear floor space for opening the door. This means, in part, the door/entrance must be oriented correctly. As a rule of thumb – we need 60" of clear accessible space adjacent to the door opening. See the diagrams on the back for approach specifics. *Sidewalk pads typically provide sufficient approach and turning space.
- 4) Accessible Toilet Stall:** The unit must be large enough with the appropriate elements to be considered accessible.
 - A) Must be identified by the International Symbol of Accessibility complying with 703.7.2.1
 - B) Must have adequate width of at least 59"x60"
 - C) Must have a door opening of at least 32"
 - D) Must have a toilet 17-19" high that is 16-18" midpoint set to the wall.
 - E) Must have grab bars 33-36" to the top edge
 - F) Must have toilet paper dispenser set 7-9" midpoint from the front of the toilet.

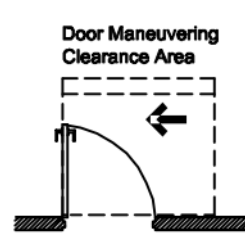
*Please contact the Colorado Springs Office of Accessibility for more information or questions or comments regarding this guidance. adacompliance@coloradosprings.gov or 719-385-5175



**FRONT APPROACH -
PULL SIDE**



**HINGE APPROACH -
PULL SIDE**



**LATCH APPROACH -
PULL SIDE**

60" Perpendicular to Doorway	60" or 54" Perpendicular to Doorway	48" Perpendicular to Doorway
18" Parallel to Entry Beyond Latch	36" or 42" Parallel to Entry Beyond Latch	24" Parallel to Entry Beyond Latch

PROPER PLACEMENT EXAMPLES



Set on Pad



Set Abutting Sidewalk

IMPROPER PLACEMENT EXAMPLES



Set on Gravel



Set on Dirt Path



Set on Grass

*Please contact the Colorado Springs Office of Accessibility for more information or questions or comments regarding this guidance. ada.compliance@coloradosprings.gov or 719-385-5175